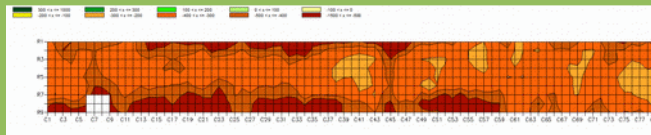
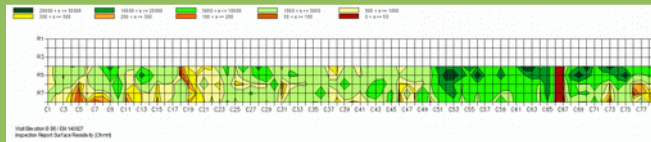
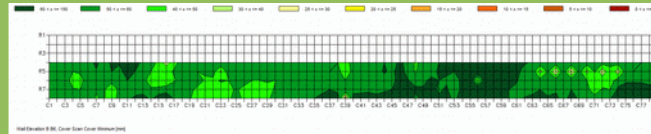




Diagnostics



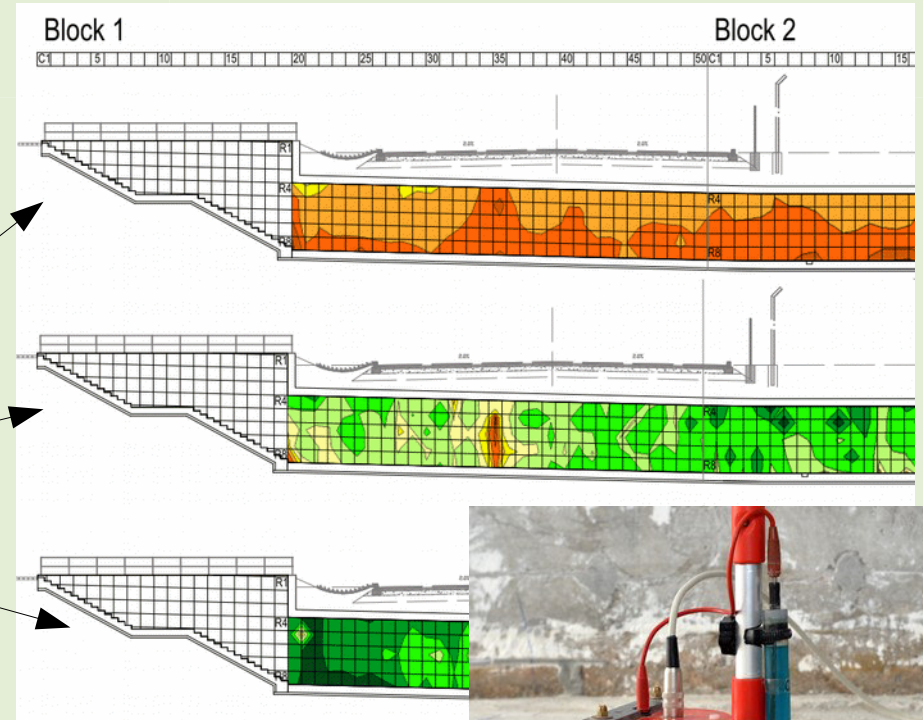
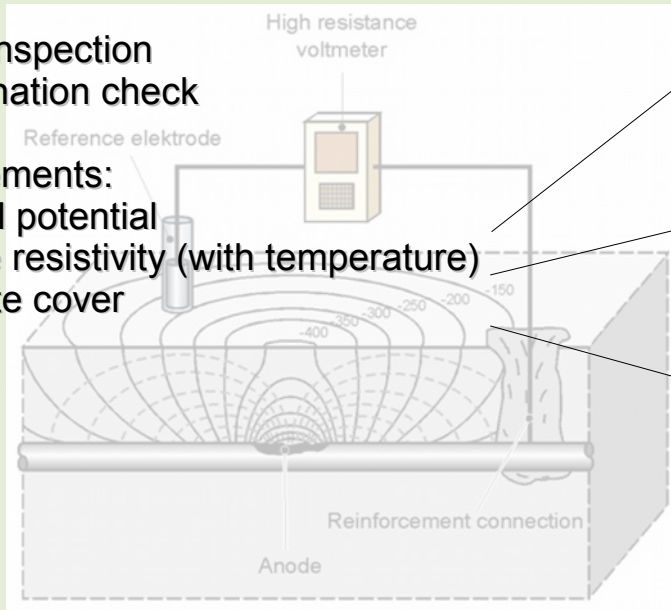
Diagnostics:

Any rectification and protection of reinforced concrete structures suffering from reinforcement corrosion requires thorough investigation of the structure and proper design.

- visual inspection
- delamination check

measurements:

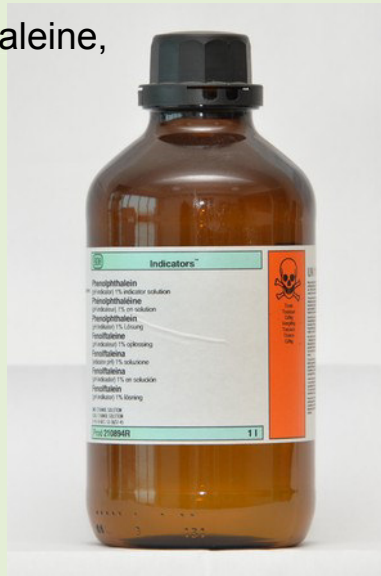
- half cell potential
- surface resistivity (with temperature)
- concrete cover



additional:

- carbonation depth (phenolphthaleine, thymolphthaleine)

- pH
- Cl-content
- moisture



- galvanostatic pulse measurement



Galvanostatic Pulse Measurement

